

Diabetes prevalence in Denmark: Current state and prediction for 2030

Bendix Carstensen Steno Diabetes Center Copenhagen
Gentofte, Denmark
<http://BendixCarstensen.com>

DES, Odense, January 2018

<http://BendixCarstensen.com>

From /home/bendix/sdc/conf/DES2018/BxC.tex



**Steno Diabetes Center
Copenhagen**

DM in Denmark

- ▶ Diabetes register for the entire Danish population (≈ 5.5 mil.)

DM in Denmark

- ▶ Diabetes register for the entire Danish population (≈ 5.5 mil.)
- ▶ Constructed from other registers:

DM in Denmark

- ▶ Diabetes register for the entire Danish population (≈ 5.5 mil.)
- ▶ Constructed from other registers:
 - ▶ National Patient register

DM in Denmark

- ▶ Diabetes register for the entire Danish population (≈ 5.5 mil.)
- ▶ Constructed from other registers:
 - ▶ National Patient register
 - ▶ Prescription register

DM in Denmark

- ▶ Diabetes register for the entire Danish population (≈ 5.5 mil.)
- ▶ Constructed from other registers:
 - ▶ National Patient register
 - ▶ Prescription register
 - ▶ Health Services register

DM in Denmark

- ▶ Diabetes register for the entire Danish population (≈ 5.5 mil.)
- ▶ Constructed from other registers:
 - ▶ National Patient register
 - ▶ Prescription register
 - ▶ Health Services register
 - ▶ Clinical quality database (DVDD, DiaBase)

DM in Denmark

- ▶ Diabetes register for the entire Danish population (≈ 5.5 mil.)
- ▶ Constructed from other registers:
 - ▶ National Patient register
 - ▶ Prescription register
 - ▶ Health Services register
 - ▶ Clinical quality database (DVDD, DiaBase)
- ▶ Covers 1996–2015 incl.:

DM in Denmark

- ▶ Diabetes register for the entire Danish population (≈ 5.5 mil.)
- ▶ Constructed from other registers:
 - ▶ National Patient register
 - ▶ Prescription register
 - ▶ Health Services register
 - ▶ Clinical quality database (DVDD, DiaBase)
- ▶ Covers 1996–2015 incl.:
 - ▶ Prevalence

DM in Denmark

- ▶ Diabetes register for the entire Danish population (≈ 5.5 mil.)
- ▶ Constructed from other registers:
 - ▶ National Patient register
 - ▶ Prescription register
 - ▶ Health Services register
 - ▶ Clinical quality database (DVDD, DiaBase)
- ▶ Covers 1996–2015 incl.:
 - ▶ Prevalence
 - ▶ DM incidence rates (new cases/PY in non-DM)

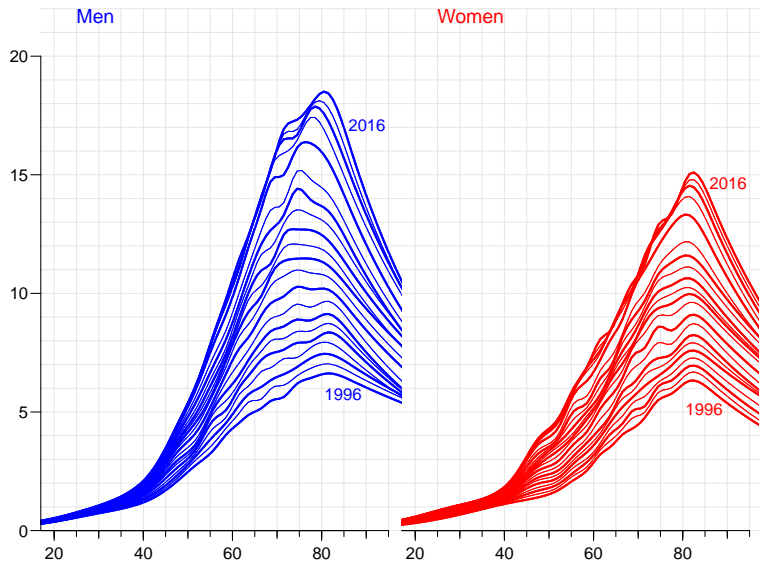
DM in Denmark

- ▶ Diabetes register for the entire Danish population (≈ 5.5 mil.)
- ▶ Constructed from other registers:
 - ▶ National Patient register
 - ▶ Prescription register
 - ▶ Health Services register
 - ▶ Clinical quality database (DVDD, DiaBase)
- ▶ Covers 1996–2015 incl.:
 - ▶ Prevalence
 - ▶ DM incidence rates (new cases/PY in non-DM)
 - ▶ Mortality rates for DM persons

DM in Denmark

- ▶ Diabetes register for the entire Danish population (≈ 5.5 mil.)
- ▶ Constructed from other registers:
 - ▶ National Patient register
 - ▶ Prescription register
 - ▶ Health Services register
 - ▶ Clinical quality database (DVDD, DiaBase)
- ▶ Covers 1996–2015 incl.:
 - ▶ Prevalence
 - ▶ DM incidence rates (new cases/PY in non-DM)
 - ▶ Mortality rates for DM persons
 - ▶ Mortality rates for non-DM persons

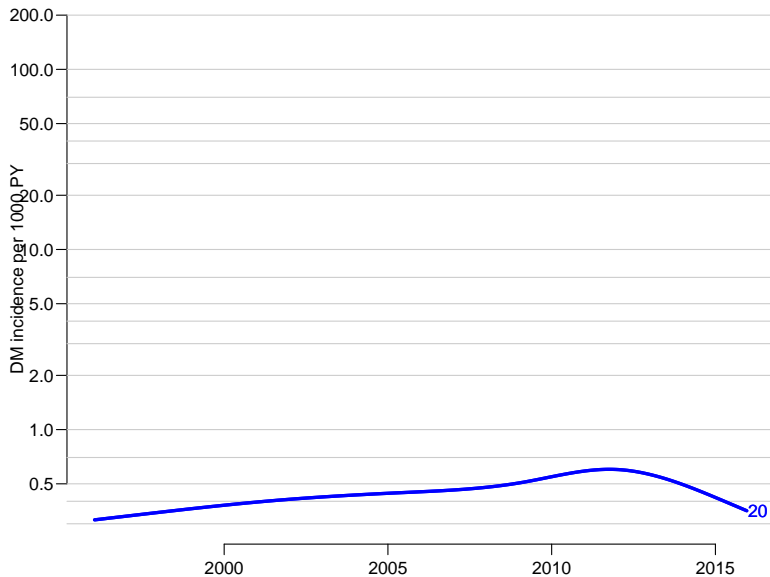
Changing prevalence of DM in Denmark



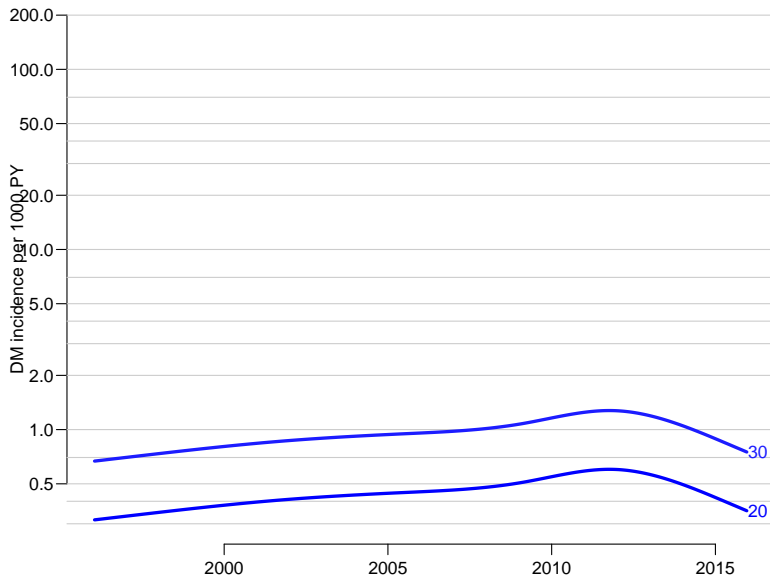
Changing incidence and mortality (%/year)

DM incidence change	Men	2.0 (1.9; 2.1)
	Women	2.2 (2.1; 2.3)
< 2012	Men	3.6 (3.5; 3.7)
	Women	3.5 (3.4; 3.7)
> 2012	Men	-11.1 (-11.6;-10.6)
	Women	-12.3 (-12.9;-11.8)
Mortality change, DM:	Men	-3.7 (-3.8; -3.5)
	Women	-3.3 (-3.4; -3.2)
Mortality change, no DM:	Men	-2.9 (-2.9; -2.8)
	Women	-2.4 (-2.5; -2.4)

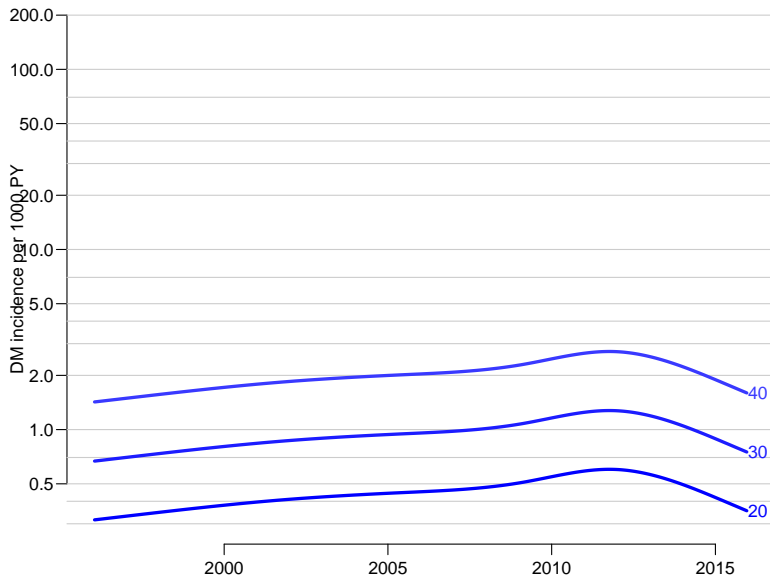
Changing incidence of DM in Denmark



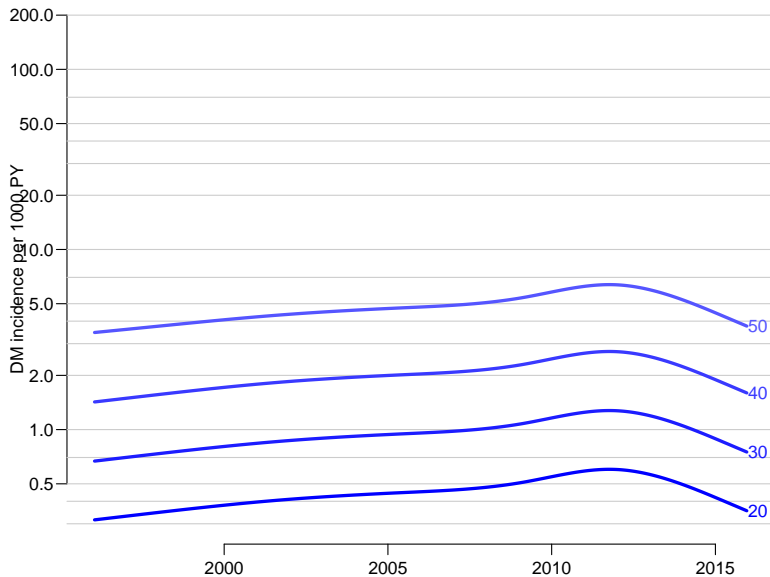
Changing incidence of DM in Denmark



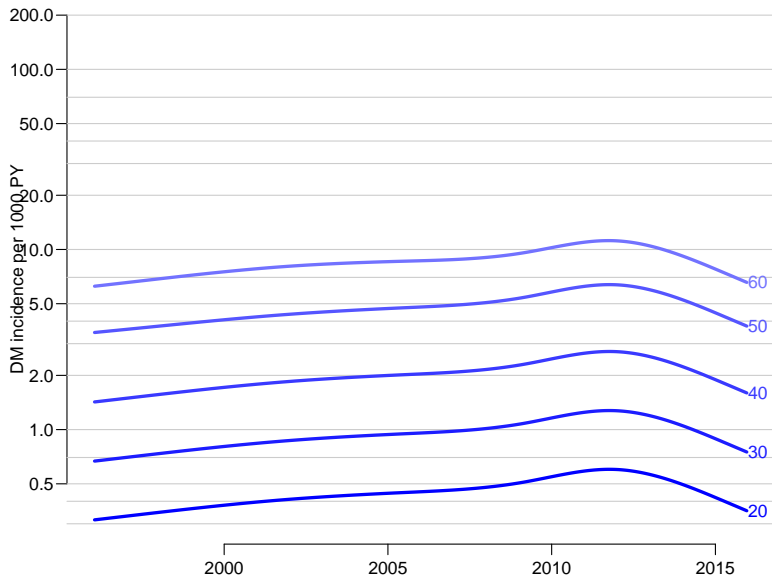
Changing incidence of DM in Denmark



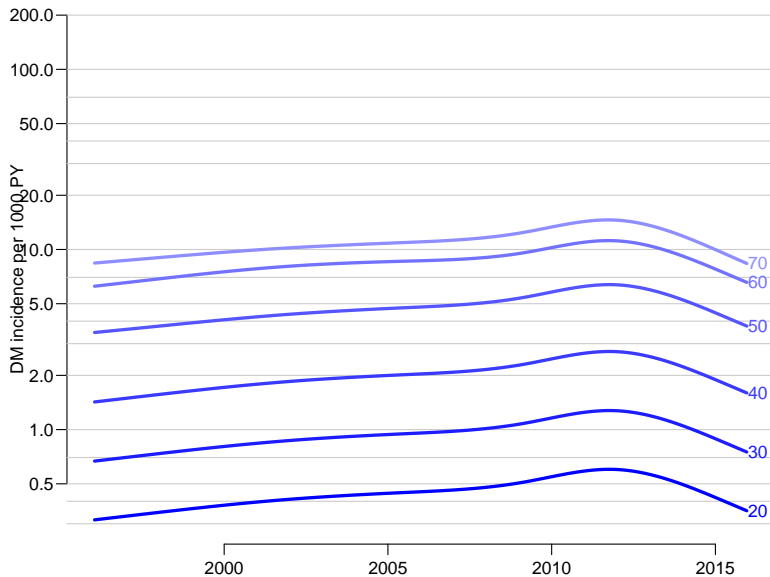
Changing incidence of DM in Denmark



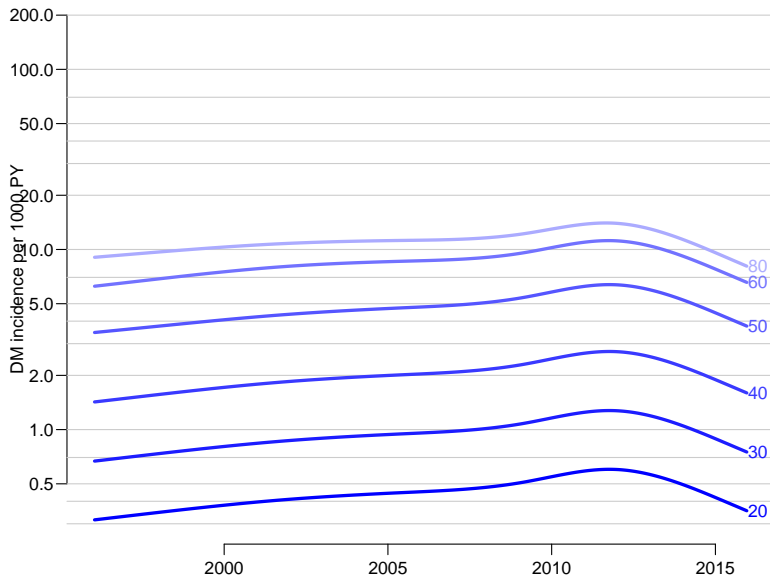
Changing incidence of DM in Denmark



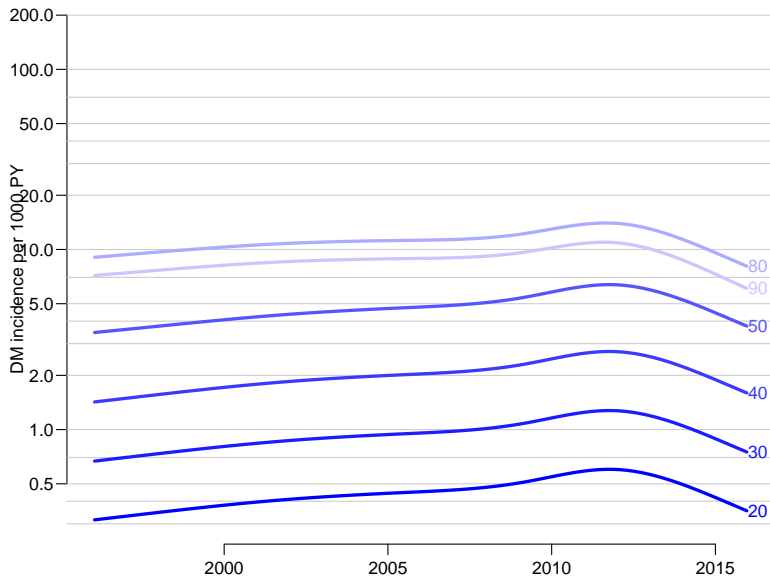
Changing incidence of DM in Denmark



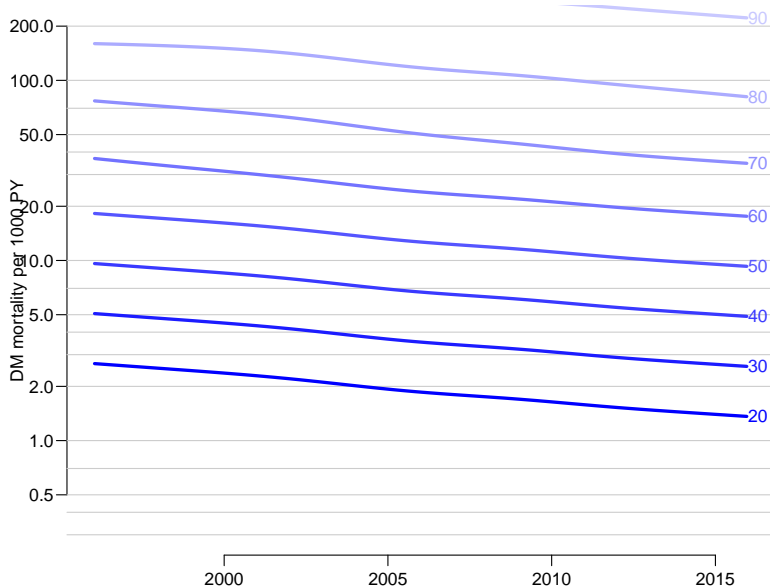
Changing incidence of DM in Denmark



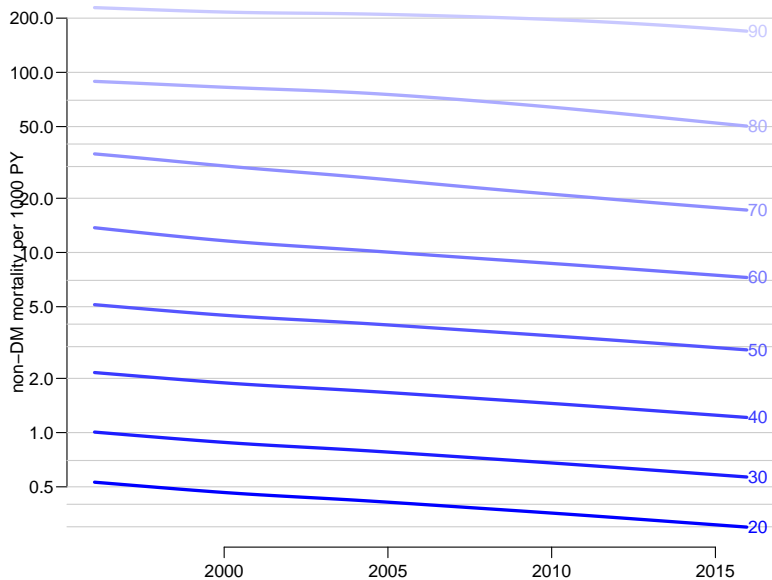
Changing incidence of DM in Denmark



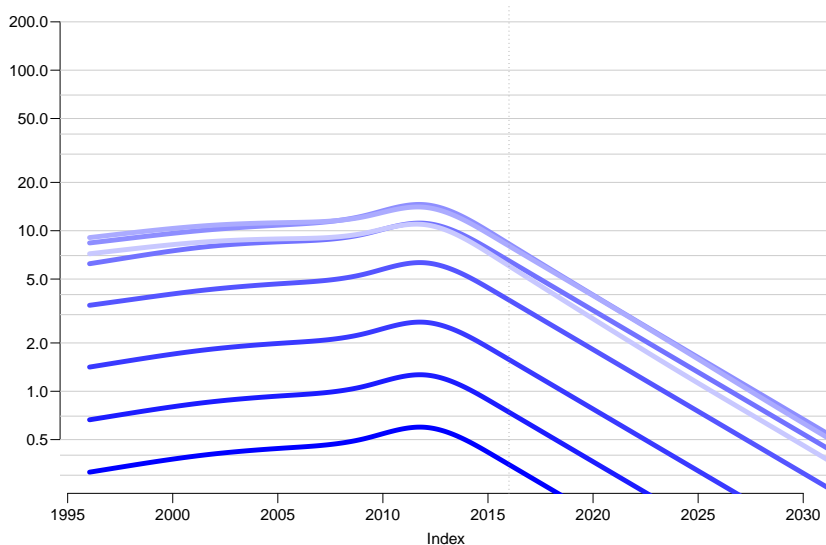
Changing mortality in DM ptt. in Denmark



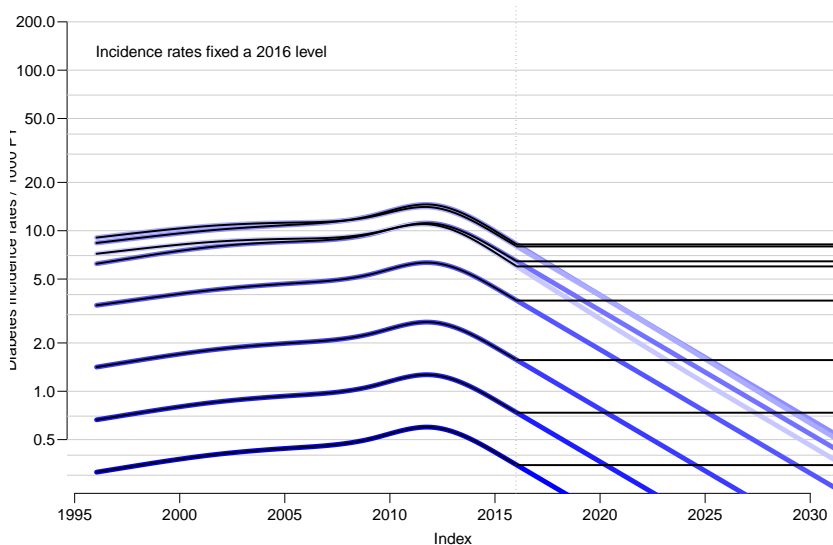
Changing mortality among non-DM persons



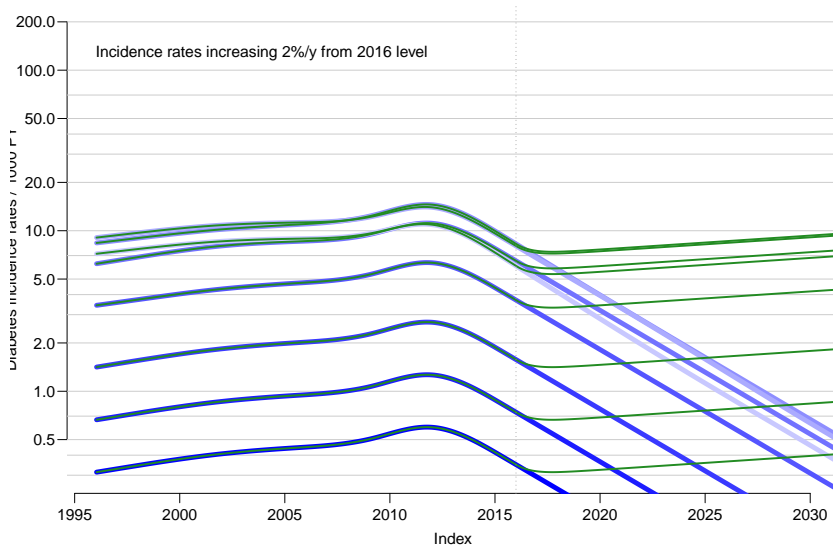
Predicting DM incidence till 2030



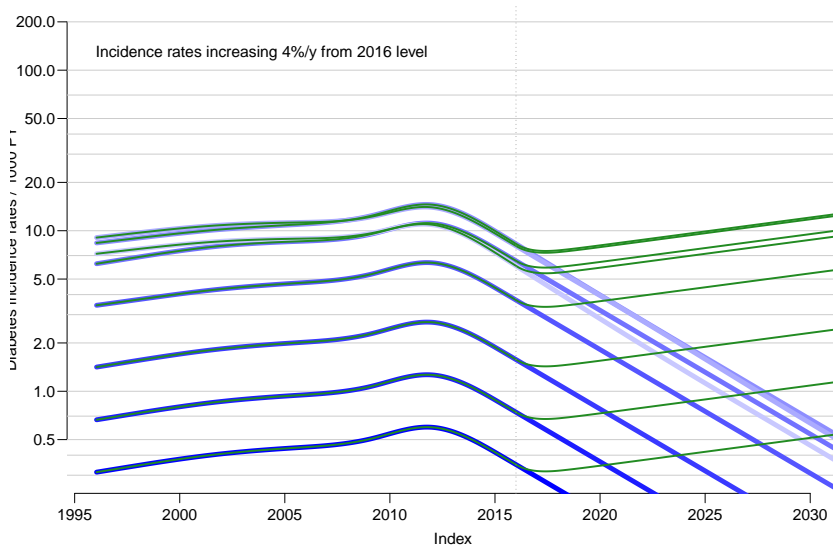
Predicting DM incidence till 2030



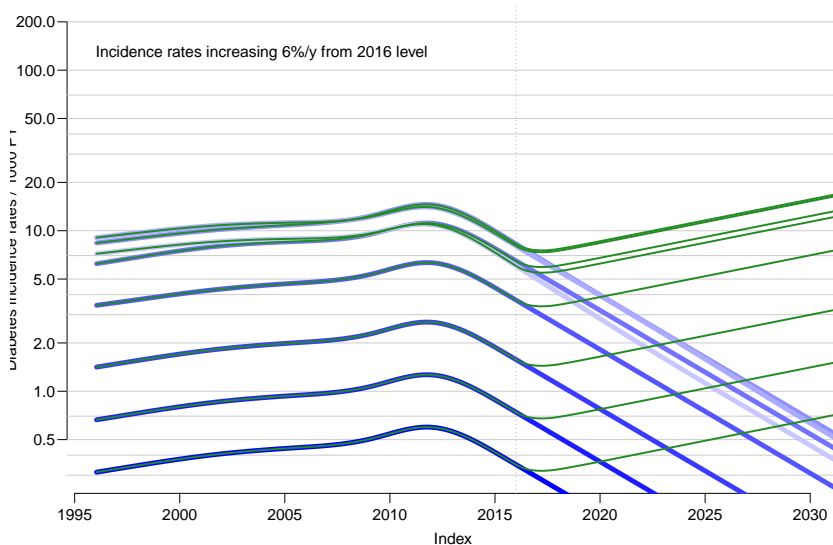
Predicting DM incidence till 2030



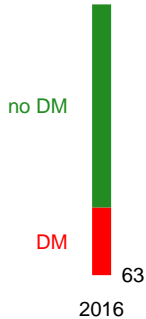
Predicting DM incidence till 2030



Predicting DM incidence till 2030



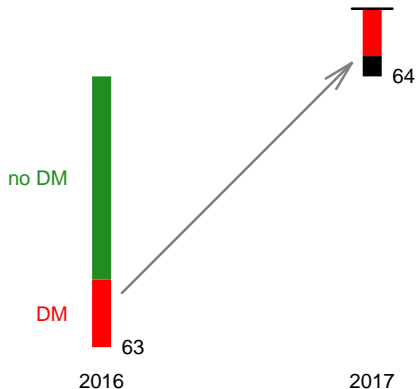
Predicting prevalence in small steps



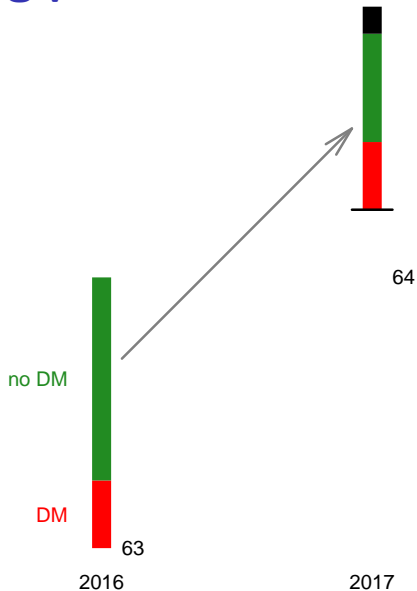
Predicting prevalence in small steps

Using:

Mortality rates for DM ptt.



Predicting prevalence in small steps

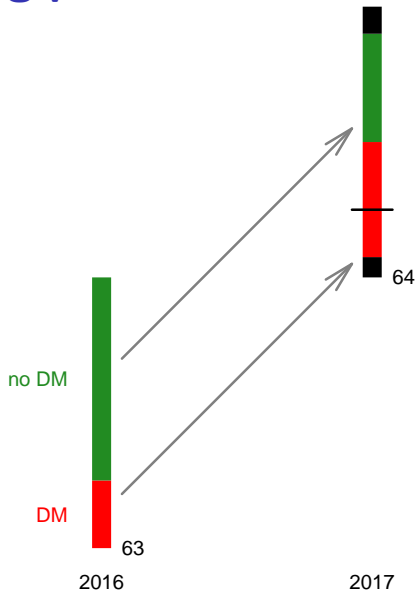


Using:

Incidence rates of DM

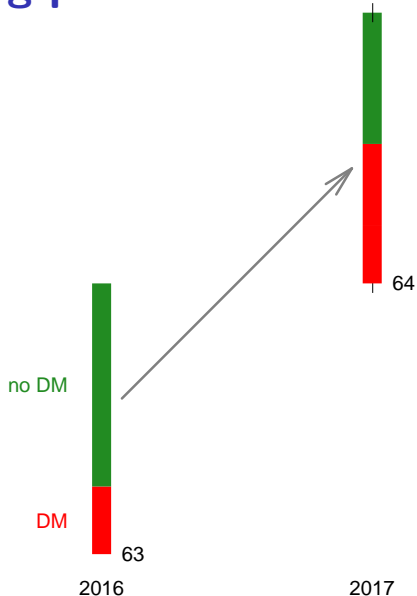
Mortality rates for non-DM

Predicting prevalence in small steps



Using:
Incidence rates of DM
Mortality rates for DM ptt.
Mortality rates for non-DM

Predicting prevalence in small steps



Using:
Incidence rates of DM
Mortality rates for DM ptt.
Mortality rates for non-DM

Predicting prevalence

- ▶ Age-specific prevalences each year

Predicting prevalence

- ▶ Age-specific prevalences each year
- ▶ Multiply with population forecast from Statistics Denmark

Predicting prevalence

- ▶ Age-specific prevalences each year
- ▶ Multiply with population forecast from Statistics Denmark
- ▶ → the **number** of diabetes patients

Predicting prevalence

- ▶ Age-specific prevalences each year
- ▶ Multiply with population forecast from Statistics Denmark
- ▶ → the **number** of diabetes patients
- ▶ We make the prediction under different incidence scenarios:

Predicting prevalence

- ▶ Age-specific prevalences each year
- ▶ Multiply with population forecast from Statistics Denmark
- ▶ → the **number** of diabetes patients
- ▶ We make the prediction under different incidence scenarios:
 - ▶ rates are as in 2016

Predicting prevalence

- ▶ Age-specific prevalences each year
- ▶ Multiply with population forecast from Statistics Denmark
- ▶ → the **number** of diabetes patients
- ▶ We make the prediction under different incidence scenarios:
 - ▶ rates are as in 2016
 - ▶ increase 2% per year

Predicting prevalence

- ▶ Age-specific prevalences each year
- ▶ Multiply with population forecast from Statistics Denmark
- ▶ → the **number** of diabetes patients
- ▶ We make the prediction under different incidence scenarios:
 - ▶ rates are as in 2016
 - ▶ increase 2% per year
 - ▶ increase 4% per year

Predicting prevalence

- ▶ Age-specific prevalences each year
- ▶ Multiply with population forecast from Statistics Denmark
- ▶ → the **number** of diabetes patients
- ▶ We make the prediction under different incidence scenarios:
 - ▶ rates are as in 2016
 - ▶ increase 2% per year
 - ▶ increase 4% per year
 - ▶ increase 6% per year

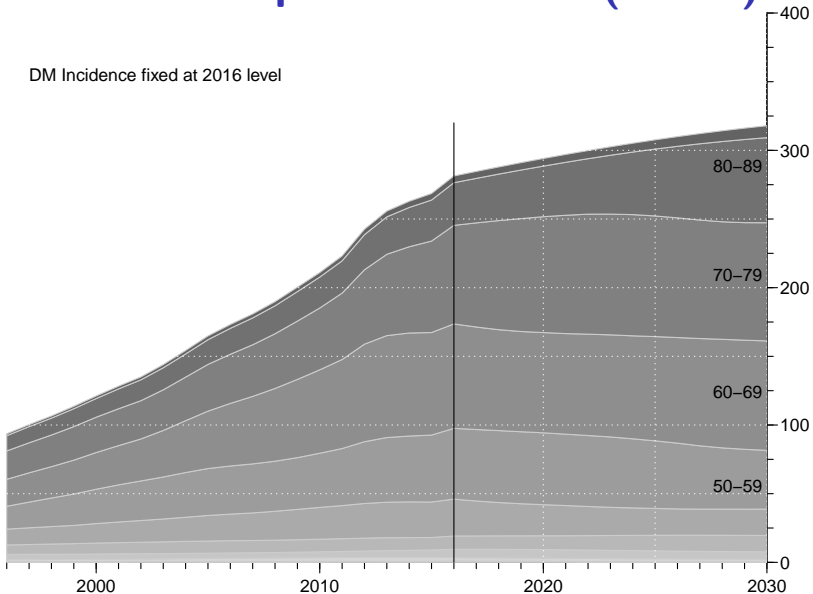
Predicting prevalence

- ▶ Age-specific prevalences each year
- ▶ Multiply with population forecast from Statistics Denmark
- ▶ → the **number** of diabetes patients
- ▶ We make the prediction under different incidence scenarios:
 - ▶ rates are as in 2016
 - ▶ increase 2% per year
 - ▶ increase 4% per year
 - ▶ increase 6% per year
- ▶ Assume mortality decrease 2.5% in non-DM persons

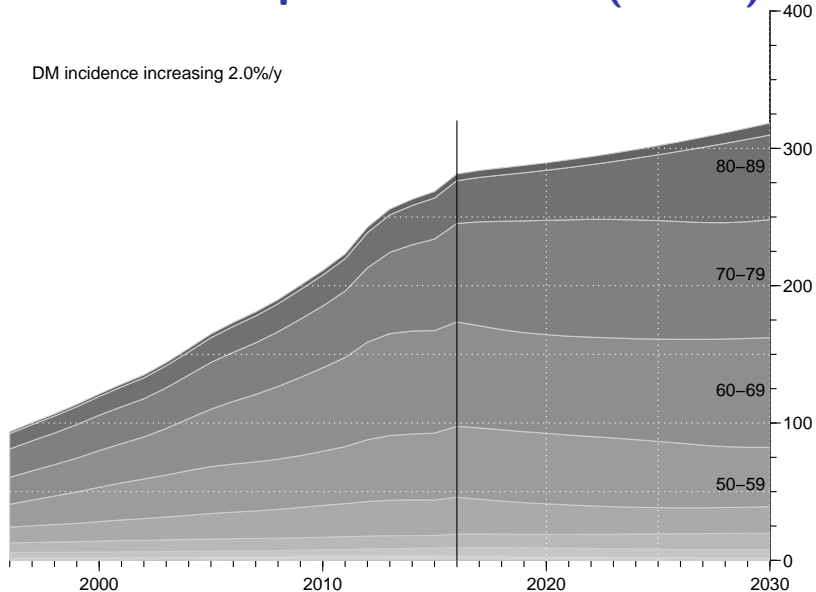
Predicting prevalence

- ▶ Age-specific prevalences each year
- ▶ Multiply with population forecast from Statistics Denmark
- ▶ → the **number** of diabetes patients
- ▶ We make the prediction under different incidence scenarios:
 - ▶ rates are as in 2016
 - ▶ increase 2% per year
 - ▶ increase 4% per year
 - ▶ increase 6% per year
- ▶ Assume mortality decrease 2.5% in non-DM persons
- ▶ Assume mortality decrease 3.5% in DM patients

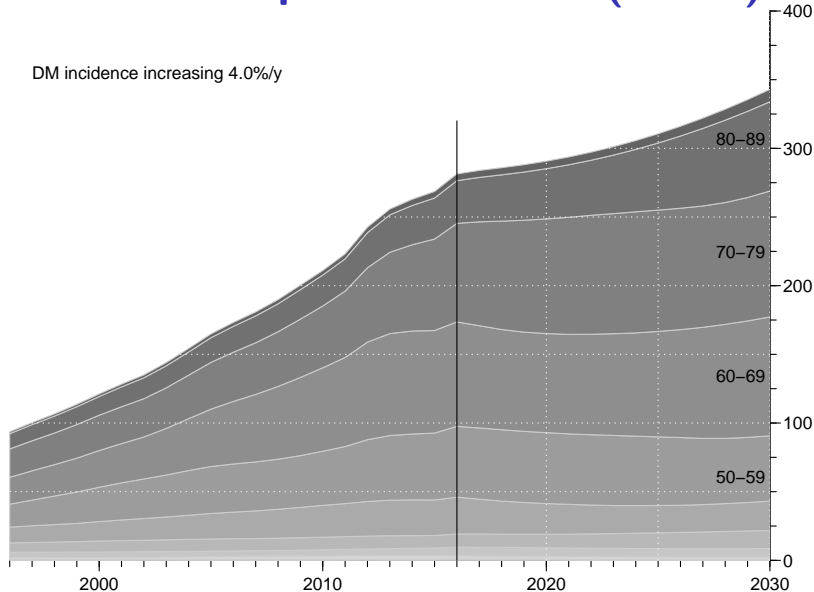
Number of DM patients in DK (1000s)



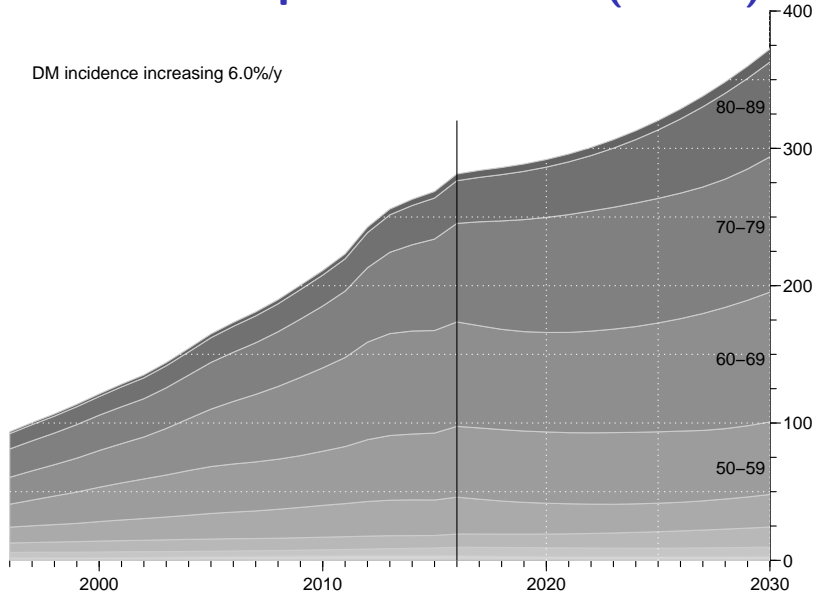
Number of DM patients in DK (1000s)



Number of DM patients in DK (1000s)



Number of DM patients in DK (1000s)



Summary

- ▶ Mortality decreasing stably:

Summary

- ▶ Mortality decreasing stably:
 - ▶ 2.5% / y for non-DM

Summary

- ▶ Mortality decreasing stably:
 - ▶ 2.5% / y for non-DM
 - ▶ 3.5% / y for DM ptt.

Summary

- ▶ Mortality decreasing stably:
 - ▶ 2.5% / y for non-DM
 - ▶ 3.5% / y for DM ptt.
- ▶ Incidence rates

Summary

- ▶ Mortality decreasing stably:
 - ▶ 2.5% / y for non-DM
 - ▶ 3.5% / y for DM ptt.
- ▶ Incidence rates
 - ▶ increasing till 2012 (3.5% / y)

Summary

- ▶ Mortality decreasing stably:
 - ▶ 2.5% / y for non-DM
 - ▶ 3.5% / y for DM ptt.
- ▶ Incidence rates
 - ▶ increasing till 2012 (3.5% / y)
 - ▶ then decreasing (12% / y)

Summary

- ▶ Mortality decreasing stably:
 - ▶ 2.5% / y for non-DM
 - ▶ 3.5% / y for DM ptt.
- ▶ Incidence rates
 - ▶ increasing till 2012 (3.5% / y)
 - ▶ then decreasing (12% / y)
- ▶ no good explanation (HbA_{1c}-criteria?)

Summary

- ▶ Mortality decreasing stably:
 - ▶ 2.5% / y for non-DM
 - ▶ 3.5% / y for DM ptt.
- ▶ Incidence rates
 - ▶ increasing till 2012 (3.5% / y)
 - ▶ then decreasing (12% / y)
- ▶ no good explanation (HbA_{1c}-criteria?)
- ▶ Prediction is **very** much guesswork.

Summary

- ▶ Mortality decreasing stably:
 - ▶ 2.5% / y for non-DM
 - ▶ 3.5% / y for DM ptt.
- ▶ Incidence rates
 - ▶ increasing till 2012 (3.5% / y)
 - ▶ then decreasing (12% / y)
- ▶ no good explanation (HbA_{1c}-criteria?)
- ▶ Prediction is **very** much guesswork.
- ▶ Total no. DM ptt. in 2030: **370,000**

Summary

- ▶ Mortality decreasing stably:
 - ▶ 2.5% / y for non-DM
 - ▶ 3.5% / y for DM ptt.
- ▶ Incidence rates
 - ▶ increasing till 2012 (3.5% / y)
 - ▶ then decreasing (12% / y)
- ▶ no good explanation (HbA_{1c}-criteria?)
- ▶ Prediction is **very** much guesswork.
- ▶ Total no. DM ptt. in 2030: **370,000**

Summary

- ▶ Mortality decreasing stably:
 - ▶ 2.5% / y for non-DM
 - ▶ 3.5% / y for DM ptt.
- ▶ Incidence rates
 - ▶ increasing till 2012 (3.5% / y)
 - ▶ then decreasing (12% / y)
- ▶ no good explanation (HbA_{1c}-criteria?)
- ▶ Prediction is **very** much guesswork.
- ▶ Total no. DM ptt. in 2030: **370,000**

Thanks for your attention.